

Zoning District Map Village of Bulyea

I certify that this document is a true copy of the original

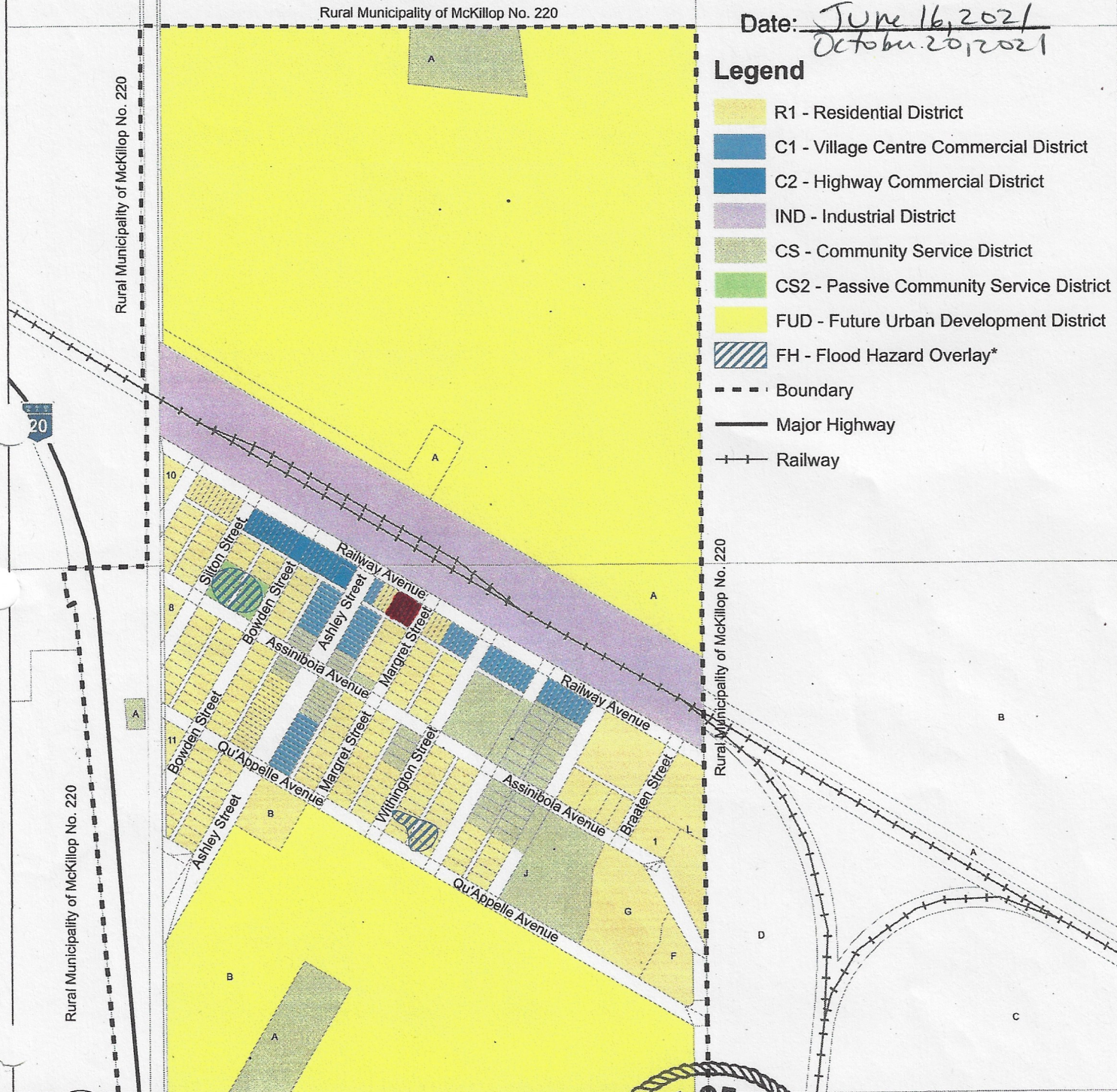


Signed: [Signature]

Date: June 16, 2021
October 20, 2021

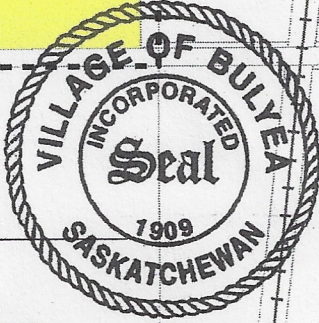
Legend

- R1 - Residential District
- C1 - Village Centre Commercial District
- C2 - Highway Commercial District
- IND - Industrial District
- CS - Community Service District
- CS2 - Passive Community Service District
- FUD - Future Urban Development District
- FH - Flood Hazard Overlay*
- Boundary
- Major Highway
- ++ Railway

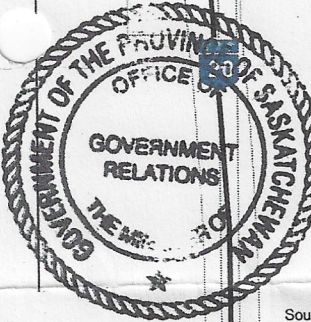


[Signature]
Mayor

[Signature]
Administrator

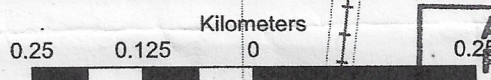


This is the Zoning District Map, referred to in Bylaw No. 12/15, adopted by the Village of Bulyea.



Note: *Flood Hazard Overlay is based on local knowledge and requires further studies to determine the proper 1:500 year flood elevation (i.e. floodway and flood fringe areas) as per the Planning and Development Act, 2007 and the Statements of Provincial Interest.

Source: GIS data was downloaded from Information Services Corporation's GeoSask website (www.geosask.ca)



APPROVED
REGINA, SASK.
OCT 30 2015
[Signature]
Assistant Deputy Minister
Ministry of Government Relations

Certified a true copy of Zoning District Map from Bylaws No. 12/15 of ~~the~~ adopted by resolution of Council on the 24 day of September, 2015.

[Signature]
Administrator

July 27, 2015